

SUNSET
PLAYHOUSE



2016-2017

Annual Report



FIDDLER ON THE ROOF

S*U*N*S*E*T P*L*A*Y*H*O*U*S*E

Vision Statement

The Sunset Playhouse is a permanent center for quality entertainment and education in the performing arts for our community of all ages.



LITTLE SHOP OF HORRORS

Mission Statement

The Sunset Playhouse is a not-for-profit Performing Arts Center serving the greater Milwaukee community by producing quality entertainment and education.

We do this by:

Nurturing Talent

Engaging Volunteers

Providing Education and Entertainment outreach through the School of the Arts

Creating the perfect balance of Community Theater and Professional Entertainment



HELLO, DOLLY!

Value Statement

We believe in a quality experience, in all areas of The Playhouse, in an atmosphere of integrity and mutual respect.

Terms we associate with our Values are:

Integrity

Joy

Nurture

Quality

Respect

Sunset Board President

MARLA EICHMANN



I am really struggling with how to describe this year's results for Sunset Playhouse—not because things are bad, quite the contrary! The challenge is to find an original way to thank all of the people who have contributed

to another fantastic year. In 2013, Sunset's equity on the balance sheet was -\$27,119. Over the last four years, equity has grown to +\$300,000. BRAVO!!!

Not too long ago, our entire production season entailed eight plays and musicals in the Furlan Auditorium. We have expanded into more than 35 productions with 196 performances on two stages. We carefully added staff to accomplish this increase. Those who have come onboard are doing a remarkable job, and they are led by a wonderful Artistic Director, Nancy Visintainer-Armstrong! I am so proud of their achievements.

The Playhouse continues to depend on donors for 20% of our financial needs. This is very conservative and your generous contributions are so appreciated. Thank you to the volunteers, the Board of Directors, patrons, producers and directors, performers and crew members, and the entire community we serve. Look for more opportunities to join us as we kick off a new campaign to engage members in very special ways.

Sunset Playhouse is, above all else, a Community. We *know* how fortunate we are to have so many dedicated patrons, donors, volunteers, staff members, *including you*, as members of that family! See you very soon at the Playhouse!

Sincerely,

Marla Eichmann
Board President, Sunset Playhouse



Sunset Board of Directors

2016-2017

Marla Eichmann – President

BS degree University of Wisconsin-Milwaukee
MBA Degree University of Michigan
Leadership America Class of 1995
AT&T Numerous mid to executive level positions over 30 years
Covid Communications – V.P. of Operations
Board of Directors – Woman's Clubs of Wisconsin

Nora Werra – Vice President

BA-University of Wisconsin-Madison
25 years in Human Resource Management
Served on numerous non-profit and professional boards

David Carter – Treasurer

BS in Accounting UWM, CPA
Vice President Lauber CFOs
Board Member Aurora Family Service
Milwaukee Rotary Club

Richard Katschke – Secretary

BS Journalism Northern Illinois University
MA Communications Theory and Performing Arts Northeastern Illinois University
Associate Vice President of Public Affairs – Medical College of Wisconsin
Board of Directors Skylight Theatre
Board of Directors Milwaukee Chamber Theatre
Budget allocation and workplace giving committee UPAF

Inge Adams – Member at Large

Retired Milwaukee Public School Teacher
Past Board Member Ulster Project
Co-Chair Sunset Volunteer Committee
Sunset Life Member

Paul Armstrong – Member at Large

BFA degree in Theatre from University of Wisconsin-Milwaukee
Graduate work in business at University of Wisconsin-Milwaukee
Owner of Best Electric Service Inc.

Bob Dude – Member at Large

BA in Economics Lawrence University
MBA and MS in Accounting University of Wisconsin-Milwaukee
U.S. Naval Intelligence Office 21 years
Executive VP and CFO for Family Health Systems 22 years
Member Senior Corps of Retired Executives (SCORE)
Board Member and Treasurer Historic Milwaukee
Faculty, Learning in Retirement

Donald Ralfs – Member at Large

BS degree Iowa State University
MBA Marquette University
Alcoa 14 years
Wisconsin Electric Power 27 years
Elm Brook Little League BOD and Commissioner
President Kiwanis Club of Elm Grove

James Santelle – Member at Large

BA degree in English & History Marquette University
Juris Degree University of Chicago Law School
United States Department of Justice (Formerly: United States Attorney & Assistant United States Attorney/Eastern District of Wisconsin)
United States Department of State (Formerly: Rule of Law Coordinator at the United States Embassy in Baghdad, Iraq)

Richard Schilffarth – Member at Large

BBA degree University of Wisconsin-Madison
Graduate work in Business University of Wisconsin-Milwaukee
Received Money Management Institute's "Pioneer Award" for structuring investment consulting and creating the Wrap Fee alternative to commissions in Financial Services Industry
Lectured at Wharton School of Business and Graduate School of Business at UW Madison
Board positions – Friends of Art, Culinary Institute of America, Skylight Theatre

Lee Szczepanski – Member at Large

New Berlin High School
WCTC – Machine Maintenance and Repair, Electronic Servicing
WCTC – Wisconsin Journeyman Machinist
Machinist/Manufacturing Engineer, KHS USA
Officer - Gill & Wing Conservation Club
15 years Sunset Playhouse Board Member

David DeAngelis – Ex Office Member

Manager Village of Elm Grove

Nancy Visintainer-Armstrong

Artistic Director – Sunset Playhouse

Artistic Director

NANCY VISINTAINER-ARMSTRONG



The 2016-17 Sunset Playhouse season was an exciting one! More than 35,000 patrons enjoyed performances of our Furlan Auditorium Productions, Musical MainStage Concert Series, SideNotes

Cabaret Series, and bug in a rug Children's Theater Series.

Overall attendance for our 2016-17 productions reached 81% - a level most theaters can only dream of reaching! Sunset's continued success and profitability can only be achieved with the hard work of our very dedicated staff and an ever-increasing volunteer base. More than 500 dedicated members of the community contributed to the success of the Playhouse by donating more than 25,000 volunteer hours during the last season. We continue to actively seek and welcome new volunteers and ask you to introduce your friends to the Playhouse and to encourage them to become a part of the Sunset family.

We look forward to our 2017-18 Season, which will feature 35 productions, including our new adult-themed After Sunset Studio Series. No other theater in the Midwest can claim as many shows in one season. No wonder we're proud to say that "Entertainment begins at Sunset!"

Looking forward to seeing you at the theater,

Nancy Visintainer-Armstrong
Artistic Director, Sunset Playhouse

Sunset Playhouse Staff

Nancy Visintainer-Armstrong | Artistic Director

Nick Korneski | Technical Director

Ann Mather | Volunteer & Membership Coordinator/
Office Manager

Paul Armstrong | Finance Manager

Erika Navin | Director of Education

Stephanie Rejman Staufenbeil | Box Office Manager

Heather Pulkowski | Administrative Assistant

Volunteers

Inge Adams
Phoebe Albert
Diana Alioto
Nicole Allee
Jennifer Allen
Kathy Andrews
Carol Anschutz
Paul Armstrong
Karen A'Rowan
Kayla Atadero
Barbara Auer
Ron Auer
Jackie Bach
Catherine Baerwald
Margaret Baisley
Josie Balcerzak
Joyce Ballard
Richard Ballard
Audrey Barr
Anna Barry
Melissa Barta
Renne Bartos
John Batory
Liz Batory
Mark Batory
Duane Bauer
Terri Belanger
Belva Benish
Bob Benish
Yacob Bennett
Tyler Berard
Emily Berger
Diane Bernier
Susan Bickler
Dee Birschel
Don Birschel
Beth Bland
Jan Blaszak
James Boylan
Leah Braverman
Dianne Breitzman
Susan Brewer
Elizabeth Brown
Kobe Brown
Mary Brozynski
Dick Bulgrin
Charlie Burbach
Olivia Burns
Jane Carrig
Beverly Carroll
Cohl Carter-Wright
Charles Cerny
Emily Chiesa
Maureen Chobanoff
David Chorski
Jen Citti
Morgen Clarey
Jean Cody
Mike Cody
Becky Cofta
Roberta Coles
Matthew Collie
Dorothea Collins
George Cook
Joanne Cunningham
Kavyn Custer
Larry Dahlgren
Richard Danielewski
Donna Daniels
Nancy Daniels
Donna Daniesl
Zachary Dean
Stephanie Demyun
Smith
Anca Deselnicu
Micheal Deselnicu
Donna Deuster
Mandi DeVos
Carol Dimitriadis
Nancy Kay Diouhy
Carol Dolphin
John R Dolphin
Dave Dombrowski

Jim Donaldson
Mike Drews
Marguerite Dunn
Rachel Dutler
Claire Dwinell
Tyler Earnest
Lydia Rose Eiche
Marla Eichmann
Caitlin Eftman
Kennedy Ellis
Janet (Jan) Endries
Pam Erdmann
Hal Erickson
Sara Lynn Evenson
Kayleigh Faber
Susan Falk
Rosie Fasi
Laura Fefferman
Barbara Figi
Ali Finken
Pat Flynn
Brett Fong
Diane Foss
Jane Foster
Marianne Foster
Ralph Frattura
Peggy Frattura
Sue Fromm
Kevin Fuller
Elsie Garcia
Ray Gardner
Mary Gensler
Tim Gensler
Elizabeth Gersonode
Scott Girmscheid
Jon Goltz
Jonathan Gorton
Zander Gratz
Pam Gray
Marguerite Greinke
Gavin Gross
Michelle Gross
Bernadette Gundrum
Amara Haaksman
Eleanor Hannan
Grace Hanson
Aune Hardt
Renee Harris
Laurene Harschutz
Donna Hart
Pat Hasenzahl
Janice Hector
Lauren Heinen
Mia Helbig
Tim Hendricks
Lauri Henning
Todd Herdt
Molly Hess
Charles Hoerz
Krysta Hoffmann
Sandra Hollander
Katie Homar
Nancy Hopper
Armstrong
Barb Horder
Margaret Howe
Keith Huennkens
Fran Hughes
Susanna Hundt
Connie Hurley-Pronley
Kathy Inkman
Pat Jablonowski
Raj Jadhav
Merry Jaeger
Scott Jaeger
Benjamin Johnson
Marie Johnson
Mike Johnson
William (Bill) Jonas
Nancy Jones
Karen Jurek
Joan Kalinoski

Derrick Karas
Kari Karth
Tim Karth
Dick Katschke
Katie Katschke
George Katsekes III
Madeleine Keane
Catherine Kearn
Judy Kern
Ella Rose Kleefisch
Cory Klein
John Klein
Caroline Klinker
Frances Klumb
Mary Knudten
Patricia Kobus
Carol Komassa
Ginny Kopischke
Joan Kopischke
Scott Kopischke
Kris Kordus
Scott Korman
Terri Kowler
Karen Kraft
Kristen Kubisiak
Sam Kuchenreuther
Joan Kuhlthau
Reggie Kurschner
Lillian Lakritz
Bob Langkau
Joannie Langkau
Chad Larget
Danielle Lemmermann
Val Letko
Ashley Levells
Robin Lewis
Briana Lipor
Gail Loosen
Jim Loveridge
Susan Loveridge
Judy Ludwig
Ted Ludwig
Nikki Lueck
Tommy Lueck
Olivia Luedtke
Mary Ellen Luxem
Jack Lynch
Henning Mahn
Tom Marks
Cathy Marschall
Chris Martin
Drew Martin
Dustin J Martin
Sara Martin
Campbell Martinez
Debbie Marx
Ann Mather
Spencer Mather
Judy Meier
Sophie Michalski
Karl Miller
Rudy Miskowitch
Joyce Molenda
Sarah Briana Monahan
Mark Mrozek
David Mueller
Karie Mueller
Danny Muntz
Julia Myre
Maria Nasby
Erika Navin
Jeanie Nazario
Liz Norton
Dennis Novak
Madison Nowak
Molly O'Connell
Joyce O'Connor
Kara Olander
Brooke Olson
Diane Ormsby
Sue Page
Bea Pamperin
A.J Pawelski
Aidan Pearson
Patty Peplinski
Rick Peplinski

Beth Perry
Terrie Peschman
Patricia Peters
Tyler Peters
Paul Peterson
Ruth Peterson
Peggy Peterson Ryan
Paul Pfannenstiel
Emily Pieper
Stephanie Pluta
Michael Pocaró
Jan Pogodzinski
Ron Pogodzinski
John Ponasik
Betty Powers
Betty Powers
Jerry Powers
Jerry Powers
Evan Prier
Jan Pritzl
Heather Pulkowski
Landon Quinney
Hannah Rahmanpanah
Tom Raidy
Nikki Ranney
Rob Rasmussen
John Raynor
Katie Raynor
Tammy Rice-Bailey
Rick Richter
Dave Riehl
Dean Rockstad
Mikhela Rosko
Jennifer Roskopf
William Rozanski
Julie Rozeak-Brady
Dominic Russo
Jim Ryan
Mary Rynders
Leila Sabree
Eric Safdieh-Nelson
James Santelle
Beverly Sargent
Leah Sawnor
Ceci Scailish
Cheryl Scharnell
Richard (Dick)
Scharnell
Alan C. Schimel
Erick Schimeffeny
Jennifer Schimeffeny
Maya Schimeffeny
Zaela Schliessel
Shawn Schmidt
Bud Schneider
Mason Schneider
Michael Schottle
James Schroeter
Gene Schuldt
Jacob Schulteis
Dave Schumacher
Diane Schumacher
David Scrobel
Emily Sebastian
Pam Seccombe
Dorene Sedlar
Caroline Seymour
Audrey Shaw
Jen Shaw
Jim Shaw
Ann Sheahan
Alana Shields
John Paul Shimek
Bonny Shkiele
James Shkiele
Susan Siegert
Laura Simonson
Lyndsey Sippel
Michael Skocir
Danny Slattery
Katrina Smith
Keith Smith
Ken Smith
Sharon Sohner
Adriana Spalsbury
Will Spitz

Sharon Sprague
Olivia Springsteen
Lee Stalter
Linda Stalter
Joshua Stangel
Edith Stankovsky
Calista Staufenbeil
Stephanie Staufenbeil
Adam Steffan
Lauren Steighner
Dennis Steinke
Susan Steinke
Phil Stepanski
Danita Stich
Hope Stiverson
Pat Stoffel
Ann Stover
Judy Strampe
Deanna Strasse
Diana Susa
Ellen Suttner
Jan Szczepanski
Lee Szczepanski
Bob Szyba
Sharon Szyba
Kali Tans
Cobi Tappa
Samantha Taylor
Marsha Tenwinkel
Kathy Terlizzi
Lois Tesch
Karen Thaker
Ava Thomann
Dorothy Thoms
Tanya Tranberg
Joanne Treinen Clarey
Sheri Turnaciff
Coleen Tutton
David Vanness
Santana Vannarath
Dave Vanness
Donna Vanness
Cindy Velcheck
Sarah Verespej
Nicholas Vieira
Glenn Villa
Nancy Visintainer-Armstrong
Sam Walker
Marty Wallner
Shelly Walther
Trevor Walther II
John J Weber
Tom Weissgerber
Sheri Weitner
Eric Welch
Shirley Wendt
Carla Werner
Mark Westen
Pat Westen
Gary Westerbeek
Kathy Westerbeek
Casey Westphal
Julia Westphal
Christine White
Gabe Wichman
Alli Williams
Annette Williams
Sami Williams
Linda Wirth
Lila Wixom
Lindsay Woelbing
Georgia Yanicke
Mia Yench
Dan Zec
Brian Zelinski
Nolan Zellermeyer
Zach Zembrowski
Brad Ziege
Erika Ziino
John Ziino
Pat Ziino
Jeanne Zimmermann
Susan Zuern



THE DIXIE SWIM CLUB

Sunset Playhouse *School for the Arts*

The mission of Sunset's School for the Arts is to provide programs that enable young people to acquire knowledge and skills in the performing arts, as well as gain lifelong interest in the arts and culture. The School for the Arts offers weekly classes for all children ages 3 – 17, specialty workshops, performing arts camps, and a fully-staged musical.



Sunset Playhouse *Actletes*

The Sunset Playhouse Actletes Troupe was launched in September, 2010 to provide high school students the opportunity to explore theater and create work based on their ideas, initiative, and perspective.



Sunset Playhouse *bug in a rug* CHILDREN'S THEATER

A three-show series produced by the School for the Arts. In addition to in-house performances, Sunset's bug in a rug productions tour area elementary schools, preschools, libraries, and community centers where thousands of children experience, many for the first time, the joy of live theater.



Director of Education

ERIKA NAVIN



Dear Sunset Stars:

The mission of Sunset Playhouse includes an emphasis on education. Our renowned School for the Arts has been educating and entertaining children for more than fifty

years. We nurture self-confidence, encourage collaboration, and value each student who participates in our programs as a unique individual.

Our 2016-17 School for the Arts season saw great success in the growth of youth in the arts. Year-round programming welcomed more than 350 students, and our School for the Arts and bug in a rug performances brought more than 2,500 patrons through our doors. Our school educated more than 1000 students at off-site locations through after-school classes, in-class workshops, high-interest days, and Girl Scout/ Boy Scout workshops. Our bug in a rug series performed for 11,500+ children in more than 60 traveling performances.

Thanks to generous grant funding from Potawatomi Hotel and Casino Heart of Canal Street, we were able to offer our High School Actletes program, in-school drama classes, a bug in a rug Junior experience, and a student audience performance of our Junior Musical.

I am proud to report all of these fantastic numbers for our School for the Arts. I, the teaching staff, and professional performers work hard to inspire a new generation of theater patrons, volunteers, and participants.

See you at the theater!

Erika Navin



Financial Overview

2016-2017 | BALANCE SHEET

ASSETS

Cash	\$	479,098	
Accounts Receivable	\$	4,836	
Other Current Assets	\$	18,199	
Total Current Assets			\$ 502,133

Fixed Assets

Building & Equipment	\$	2,617,034	
Depreciations	\$	(1,931,904)	
Total Fixed Assets			\$ 685,130

TOTAL ASSETS **\$ 1,187,262**

LIABILITIES AND EQUITY

Advanced Ticket Sales	\$	170,096	
Other Current Liabilities	\$	139,149	
Total Current Liabilities			\$ 309,245

Mortgage	\$	443,537	
Other Long term Liabilities	\$	100,000	
Total Long Term Liabilities			\$ 543,537

Total Equity \$ 334,480

TOTAL LIABILITIES AND EQUITY **\$ 1,187,262**

Note: Total Mortgage = \$ 479,960

Includes Both Long Term and Short Term Portions

Sponsor a Sunset Show

There are many great opportunities to sponsor a Furlan Auditorium Production, Musical MainStage Concert, A SideNotes Cabaret Show or a bug in a rug Children's Theater Show. A sponsor is recognized in the show's program, in the advertisements and eblasts for the show, and on Sunset's website. A sponsor of a Furlan Auditorium

Production receives 50 tickets to the show and the use of the Studio Theatre for a pre-show reception. Following the performance, the sponsor's guests may return to the Studio Theatre to continue their party and meet the cast members at this post-performance reception.



Advertise in a Sunset Program

There are eight programs per season. There are 2150 performances in a season showing to 30,000 to 35,000 people. The audience of the Sunset Playhouse is composed primarily of Milwaukee and Waukesha County residents with the resources to attend the theater and patronize our advertisers. An ad in one or the entire Furlan Auditorium Production Season is a perfect opportunity for businesses to reach a loyal customer base while supporting the Sunset Playhouse.

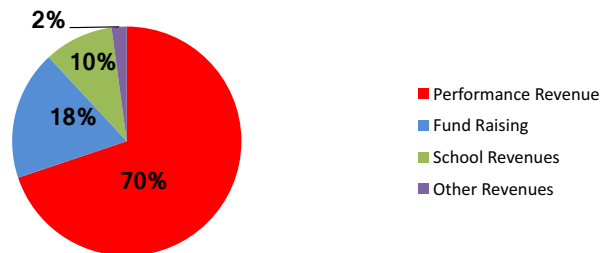


Financial Overview

REVENUE AND EXPENSE STATEMENT | 2016-2017

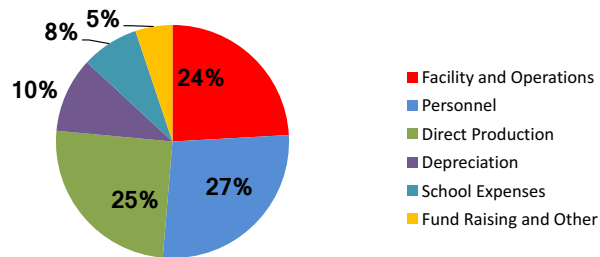
Revenue

Performance Revenue	\$ 681,600
Fund Raising	\$ 178,244
School Revenues	\$ 95,343
Other Revenues	\$ 20,787
Total Revenue	\$ 975,975



Expenses

Facility and Operations	\$ 207,100
Personnel	\$ 233,814
Direct Production	\$ 215,928
Depreciation	\$ 89,465
School Expenses	\$ 68,379
Fund Raising and Other	\$ 44,222
Total Expenses	\$ 858,909

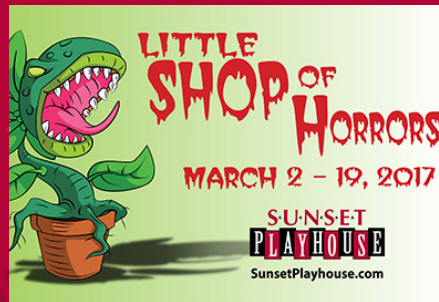
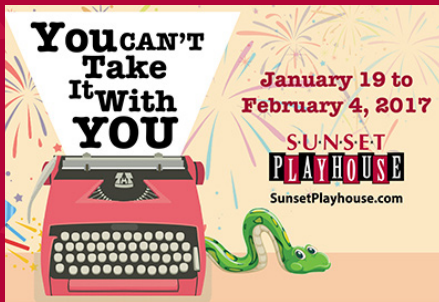


Net Operating Result **\$117,067**



2016-2017 Season

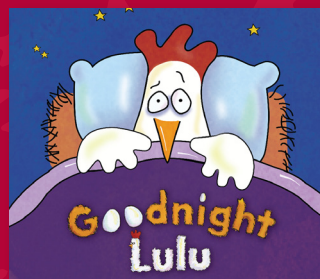
Furlan Auditorium Productions



Sunset Playhouse bug in a rug Children's Theater



November 9-12, 2016



February 8-11, 2017



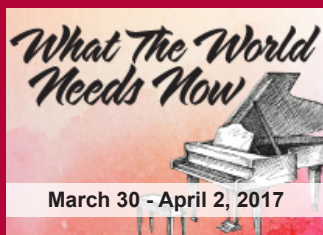
May 10-13, 2017

2016-2017 *Season*

Musical MainStage Concert Series



SideNotes Cabaret Series

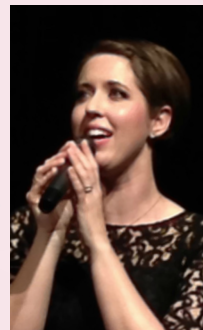


Musical MainStage Concert Series

SideNotes Cabaret Series



This popular series celebrates its twelfth season! Six annual concerts, each with a different theme, showcase professional singers and musicians on the Furlan stage. With a few short rehearsals, these pros jump up on the current set where they're joined by two narrators offering humorous and informative play-by-play. Plus, Musical MainStage has featured almost fifty talented high school students, many of whom have gone on to prestigious conservatories and professional stages across the country. Sunset is very proud to host this fun series and our audiences continue to agree!



Now in its tenth season, Sunset's SideNotes Cabaret Series continues to offer a unique assortment of outstanding musical entertainment presented by talented professionals in an intimate, casual setting. The shows feature music from theatre, film, popular culture, and the Great American Songbook, often highlighting show biz legends who have helped shape the world of entertainment. Patrons relax with a cocktail or glass of wine and enjoy an exceptional and distinctive evening of lively performances presented by the area's finest performers and musicians.

A Celebration of Giving

Sunset Playhouse acknowledges the individuals, corporations, and foundations whose generosity confirms the importance of live theater in our community. In recognition of this support and encouragement, we proudly list their names in thanks. This list reflects those who donated to Sunset Playhouse from September 1st, 2016 to September 1st, 2017.

Angels (\$10,000+)

Anonymous
Werra, Jude & Nora
Westen, Mark & Pat

Producers (\$5,000-\$9,999)

Pritzl, Karen A'Rowan & Jan
RBC Wealth Management

Directors (\$1,000-\$4,999)

Armstrong, Paul & Nancy
Visintainer-Armstrong
Arzbaeher, Amy
Carlson, Bob & Arlene
Casey, Jean
De Medici, Nicola & Marino
Dolphin, Carol
Dude, Bob & Mary Ann
Eichmann, Marla
Esposito, Danny & Kay
Fuchs, Matt
Gensler, Tim & Mary
Goodland, John
Katschke, Richard & Vickie
Kopischke, Ginny
Krieg, Christine & Raymond
Loveridge, Susan & Jim
Mooser, Erik & Carol
Pape, Eileen
Peterson, Elaine
Proebsting, Doug & Wendy
Schilffarth, Richard & Marlene
Shirley, Nancy & Tom
Wenzel, Beth & Brent
Woman's Club of Wisconsin
Foundation

Playwrights (\$500-\$999)

Adams, Inge
Armstrong, Nancy Hopper
Goodman, Dr Burton E. & Harriet
Bocksenbaum
Impreglon Inc
Johnson, David & Mel
Kopischke, Scott & Joanne
McIndoe, Robert
Meller, Robert C
Peterson Ryan, Peggy
Ralfs, Don & Mary Ellen
Robinson, Gwen & Reece
Schmitz, Linda
Swanson, Donna
Szczepanski, Lee & Jan

Actors (\$250-\$499)

Boeckeler, Al
Cody, Jean
Crump, Pat & Phil
Drezek, Margaret
Flynn, Helen
Gantner, Jerry & Ron MacDonald

Graninger, Frank
Hall, Allen & Susan
Hart Bieneman, Kerry
Heil, Jon, PC IT BACK
TOGETHER
Isler, David
Kwiatkowski, Patrick & Patrice
Mater, Annie & Paul
Parkside 23 Derosa Corporation
Schuppner, Ken & Lisa
Schwaab, Robert & Connie
Skimmons, Joan
Smith, Kenneth & Candace
Timmler, Sylvia

Designers (\$100-\$249)

Andrae, Michael & Luisa
Azzolina, Carlye
Baesemann, Jean
Beyer, Janice
Bisbing, Leslie & Ron
Boeck, Pat
Braun, Janet
Butenhoff, Neal & Carla
Campbell, Eileen & Fraaland
Cauley, Eileen
Chicorel, Ralph & Debbie
Dalton, Debra
Desjardins, Nancy
Dettmann, Dolores & James
Dinsmoor, Elizabeth S.
Doormink, Doreen
Elliott, Terry
Engelbrecht, Janice
Ford, Gail
Fulton, Ellen
Garcia, Ralph & Paula
Grenlie, Lavonne
Gross, Beverly & Robert
Haag, Sue
Haas, George & Patricia
Hampel, James
Hemmingsen, Barb
Henke, Dawn & Fred
Hennes, Michael, Dawn, &
Meguire
Hintze, Richard & Mariann
Hirsch, Virginia
Houtkamp, Patricia
Hutton, Ted & Sharon
James, Pat
Jodi, Ells
Johnson, Bryan & Ellen
Kaczmarek, Margie
Kasten, Arlene
Keller, Harvey
Kellogg, Susan J.
Knutten, Mary
Lackas, Amy
Laste, Bill & Judy
Laszewski, Ruth

Lennon, Jan
Limbach, Joanne
Longtin, Thomas & Debra
Mahn, Henning & Elaine
Makovec, Ruth
Markowski, Janine
Mcmullen, Jane
Miller, James & Susan
Mueller, Shirley
Murphy, Sharon
Nason, John
Navin, James & Sylvia
Nazario, Mary Jean
Nettesheim, Joel & Donna
Olia, James
Otterstein, Lyn & John
Paulos, Maryanne
Peters, Patricia
Pflugradt, Sue
Powers, Tom & Kathy
Rabideau, Brian & Amy
Rejman, George & Judy
River's End Gallery,
Rooks, Cindy & Richard
Rottmann, Timothy
Russell, Ray
Sass, Jeri
Schimmel, Al
Schimmel, Christopher & Beth Ann
Schuldt, Barb
Sebranek, Nancy
Stalter, Linda & Lee
Stankovsky, Jim & Edith
Super, Darryl
Taylor, Jerry & Laurene
Thielen, John & Beverly
Thompson, Marcia
Thompson, Marianne
Toohill, Patrick
Treadwell, Rick
US Bank
Van Eerden, Robert & Loraine
Wanta, Laura
Warchol, Patricia
Weitenbeck, Mark
Weither, Sheri
West, Paul & Kathy
Wiitala, Marion
Wilbert and Genevieve Schauer
Foundation
Yanicke, Georgia
Zellmer, Kathleen

Stage Managers (\$25-\$99)

Ahlswede, Eileen
Allen, Jane
Allison, Carol
Apalsch, Brigita
Arvedson, Joan
Bach, Jacqueline
Balint, Marjorie & Joseph

Bansemer, Wayne
Barkow, Sandra
Barry, John & Sandra
Bauer, Claire & Duane
Bauer, Judy
Beck, Dorothy
Becker, Carole
Beischer, Sharon
Bitterberg, Patricia & Gene
Bodine, Claudia
Bohan, Linda
Borch, Robert C. & Linda
Wickstrom
Bower, Patricia
Boyd, Patricia
Brell, Trudy
Breunig, Karen
Briski, Harriet
Brown, Edith
Bruss, Jillian
Buelow, Karen & Tom
Buraczewski, Rita
Burmeister, Sally
Butz, Marie
Callen, Anne
Calvey, Edward
Carlson, Alan & Carol
Cassell, Ann
Chiapusio, Thomas
Chrisien, Jacquelyn
Clark, Jennifer L.
Clausing, Kathleen
Cohen, David
Daniels, Nancy
Davidson, Linda
Dekalb, Kathy
Derus, Laurie
Deselnicu, Anca
Di Fonzo, Mark & Julie
Dreikosen, Marianne
Drescher, Gary
Drummond, Patricia
Duckler, Mari
Dunst, Janet
Edwards, Maris
Eisner, Dale
Ellington, Grant
Engel, Janet
Engelhardt, James
Erickson, Harold
Esselman, Rita
Falk, Kathleen
Flores, David
Forbes, Barbara
Fosnight, Wallace & Joan
Fraenzl, Terrence
Franke, Brent
Frankel, Natalie
Franz, Margaret
Gawronski, Mary
Geis, Carol

Goodnetter, James
 Gorzalski, Tom
 Gratz, Bernie & Sandra
 Greis, Margaret
 Groth, Bob & Joan
 Gruhn, Teresa
 Grygny, Joseph
 Haas, Kathleen
 Hamilton, Beverly
 Hanaway, Sara
 Hanson, Eric
 Harenda, Beth
 Hart, Donna
 Hartwig, Janet
 Hately, Jeneane & Daniel
 Herrera, Rebekkah
 Herrmann, Jim & Susan
 Hoernke, Irene
 Hohing, Laura
 Hohlweck, Mary
 Hoppe, W.E & B.D
 Hummer, Cindy
 Hundt, Ashley
 Jacklin, George
 Jeske, Jim
 Johnson, Marjorie
 Johnson, Douglas & Dorothy
 Kalinoski, Joan
 Kalogjera, Araceli
 Kanehl, Carol
 Kaniasty, Nancy
 Kasun, Joy
 Kaun, Doris
 Kegel, Karen
 Kelley, Holle & Richard
 Kelly, Maureen
 Klockow, Carol
 Klug, Anne
 Klumb, Frances
 Koeble, Charles E
 Komassa, Carol
 Krafcheck, Leroy
 Krier, Charles A & Julie S
 Kritner, Christine
 Krueger, Lucy
 Kult, Bob & Laurel
 Kveen, Jessica
 Lachapelle, Clement & Clarice
 Lamers, Brad & Janice

Lape, Irene
 Leack, Bob
 Leklem, Mary
 Mackus, Edward
 Manz, Jean
 Marty, James & Marjorie
 McGarigle, Karen
 McGinty, Janet
 McHale, Julie
 McNew, Delores
 Merkel, Katy
 Meyer, N J DE
 Miller, Judy
 Miskowitch, Rudy
 Moertl, Paul & Carol
 Monday, Judy
 Mueller, Dan & Shirley
 Muntz, Deena
 Murphy, Jim
 Myszewski, John
 Nevin, David
 Newton, John
 Noonan, Jack
 Nord, Ted & Catherine
 Ohm, John
 O'Malley, Adeline
 Pavich, Sharon
 Pearson, Richard & Lynne
 Peplinski, Rick & Patti
 Piatt, Joseph & Traci
 Hunlemann-Piatt
 Powell, Gregory & Rosemarie
 Prasser, Jeff & Debbie
 Probst, Jody
 Pronley, Daniel
 Rachow, Mary Ann
 Rasmussen, Robert Louis
 Re-Watson, Jamie
 Richter, Rick
 Rosen, Bonita
 Rosenheimer, Paul & Nancy
 Rowe, Tom & Jean
 Roy, Charles
 Rumschlag, Jean
 Rutter, Jennifer
 Rynders, Mary
 Sattler, Dirk
 Sazama, Francis Wilson &
 Jaqueline

Schellhaas, Glenn
 Schenian, Ken & Lorraine
 Schimelfenyg, Jennifer
 Schlidt, Jean
 Schmidt, Lorraine
 Schmidt, Patricia
 Scholz, Lester & Mary Ellen
 Schwalbe, Laurie
 Schwenk, Kathy
 Scrobel, David & Delores
 Sewell, Robert & Caryl
 Sievert, Dale
 Simeone, Robert
 Sippel, Lyndsey
 Snyder, Nancy
 Soyk, Ron & Joanne
 Spang, Rose
 Stiglitz, Mary Ann
 Stokes, David & Sarah
 Szaj, Arnold
 Szczepanski, Beverly & Jerome
 Taylor, Nicole
 Tiefenthaler, Timothy & Kathy
 Tiffany, Thomas
 Trainor, Jim & Joan
 Tribble, Barbara
 Troglia, Mary
 Trummer, Ed
 Turow, Gerald & Dorothy
 Utech, Carol
 Voelker, Kathleen
 Wanserski, Karen
 Warner, Kathy
 Weihing, Barbara
 Wenzel, Thomas & Karen
 Werderitch, John & Kathy
 Weston, Paul J. & Carie
 White, Marilyn & Randy
 Wilkowski, Erv & Mickey
 Wisniewski, Karen
 Zeidler, William
 Zerrien, Donna

Memorial Gifts

In Memory of Bud Caprioli
 In Memory of Joyce L Chiapusio
 In Memory of Ruth Kotnek
 In Memory of Irv & Audrey Zirbel

Honoring Gifts

In Honor of Caroline Klinker
 In Honor of Karen O'Connor
 In Honor of Dick Schilffarth

In Kind Gifts

Armstrong, Paul & Nancy
 Visintainer-Armstrong
 Asunto, Sonja
 Bach, Jacqueline
 Carlson, Bob
 Cauley, Eileen
 Dalton, Debra
 Drezek, Margaret
 Eichmann, Marla
 Elliott, Terry
 Gensler, Tim & Mary
 Grenlie, Lavonne
 Haas, George & Patricia
 Heil, Jon, PC IT BACK
 TOGETHER
 Hennes, Michael, Dawn, &
 Meguire
 Hirsch, Virginia
 Hohing, Laura
 Houtkamp, Patricia
 Impreglon, Inc,
 James, Pat
 Jodi, Ells
 Johnson, Marjorie
 Katschke, Richard & Vickie
 Kaun, Doris
 Kellogg, Susan J.
 Kopischke, Scott & Joanne
 Kreznar, Andrea
 Limbach, Joanne
 Miller, James & Susan
 Miskowitch, Rudy
 Pape, Eileen
 Pritzl, Karen A'Rowan & Jan
 Pulkowski, Heather
 Schilffarth, Richard & Marlene
 Schmitz, Linda
 Taylor, Jerry & Laurene
 Warchol, Patricia
 Weither, Sheria
 West, Paul & Kathy



AND THEN THERE WERE NONE

SUNSET PLAYHOUSE

2017-18 our
58th Season!

Furlan Auditorium Productions

Sept 7 - 24, 2017	OVER THE RIVER AND THROUGH THE WOODS
Oct 12 - Nov 5, 2017	SISTER ACT
Nov 30 - Dec 23, 2017	BEAUTY AND THE BEAST
Jan 18 - Feb 3, 2018	ROOM SERVICE
March 1 - 18, 2018	INTO THE WOODS
April 19 - May 6, 2018	DON'T DRESS FOR DINNER
May 31 - June 17, 2018	ANY NUMBER CAN DIE
July 12 - Aug 5, 2018	THE PRODUCERS

Musical MainStage Concert Series

Sept 18 - 19, 2017	ELVIS!
Oct 23 - 24, 2017	THE BRITISH INVASION: BEYOND THE BEATLES
Dec 4 - 5, 2017	HOMEWARD BOUND: SIMON & GARFUNKEL
Jan 29 - 30, 2018	ELTON JOHN: ROCKET MAN
March 12 - 13, 2018	HEARD IT THROUGH THE GRAPEVINE: MOTOWN
April 30 - May 1, 2018	BAND ON THE RUN

SideNotes Cabaret Series

Oct 5 - 8, 2017	YOU'VE GOT A FRIEND: CAROLE KING & JAMES TAYLOR
Dec 13 - 17, 2017	OUR FAVORITE THINGS: JULIE ANDREWS
Feb 15 - 18, 2018	PEOPLE WILL SAY WE'RE IN LOVE: RODGERS & HAMMERSTEIN
March 22 - 25, 2018	BOYGIRLBOYGIRL
May 17 - 20, 2018	IT'S TOO DARN HOT: COLE PORTER
June 14 - 17, 2018	THE QUEENS OF COUNTRY

After Sunset Studio Series

Oct 26 - 29, 2017	PHANTASIES SUCH AS THESE: EDGAR ALLAN POE
Jan 11 - 14, 2018	THE GRADUATE
April 5 - 8, 2018	BETRAYAL
June 7 - 10, 2018	HEATHERS THE MUSICAL

bug in a rug Children's Theater

Nov 15 - 18, 2017	SWITCH WITCH
Feb 7 - 10, 2018	CAPS FOR SALE
May 9 - 12, 2018	ANIMAL TALES: AESOP'S FABLES